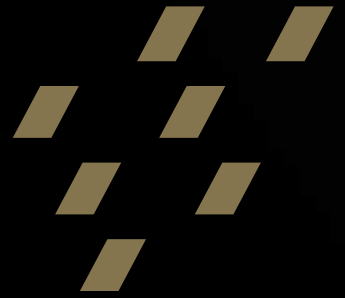


NEW G-ænia[®] Universal Injectable

Discover the absolute genius behind
our strongest universal composite ever



GC

Welcome to the future

G-ænial® Universal Injectable is a beautiful, high-strength universal composite, applied with the irresistible convenience of direct injection delivery. GC's ingenious composite technology heralds a new era in composite placement.

Amazing characteristics

Full-strength, beautiful aesthetics, self-polishing and porosity-free

Work faster

With direct injection delivery

High radiopacity

252%AI for optimal diagnostic contrast

Adapt, shape & contour

All at once as you inject with effortless extrusion

No wastage

Use just the amount you need

Total control

No slumping, no stringing, more stackable

It will change the way you work.



Truly Universal Application

G-ænial® Universal Injectable is perfect across the entire range of cavity classifications and more.



Class I



Class II



Class III



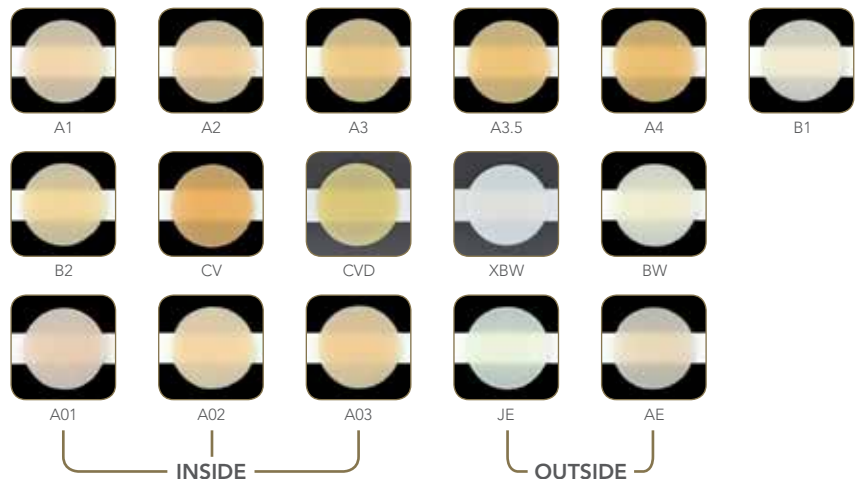
Class IV



Class V

Universally Satisfying

New tip design gives you the flexibility to adjust tips to suit every application for superior cavity adaptation, faster application and greater control. Two sizes – infinite shapes. Highly aesthetic restorations can be achieved using a single shade or multi-shade layering technique.

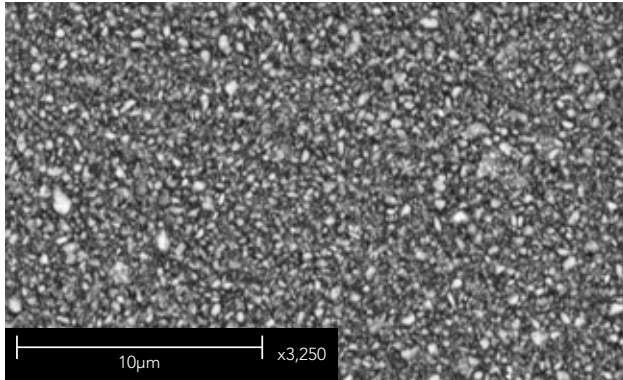


Universally Superior Technology

G-ænia[®] Universal Injectable features 150nm glass fillers densely packed and individually silane-bound within a hydrophobic resin in an injectable consistency. The heightened structural density of G-ænia[®] Universal Injectable is the foundation for its universally superior physical properties.

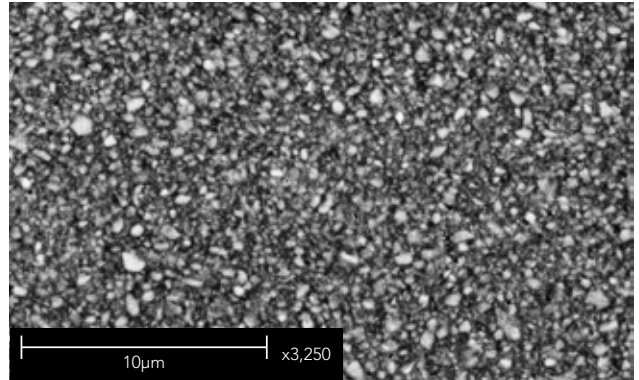
G-ænia[®] Universal Injectable

Features 150nm homogeneously dispersed fillers



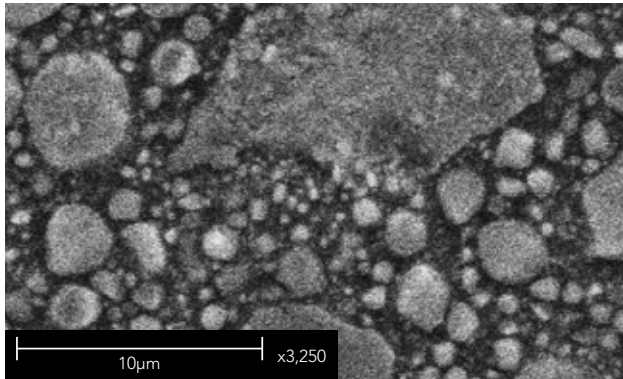
G-ænia[®] Universal Flo

Contains 200nm homogeneously dispersed strontium glass fillers



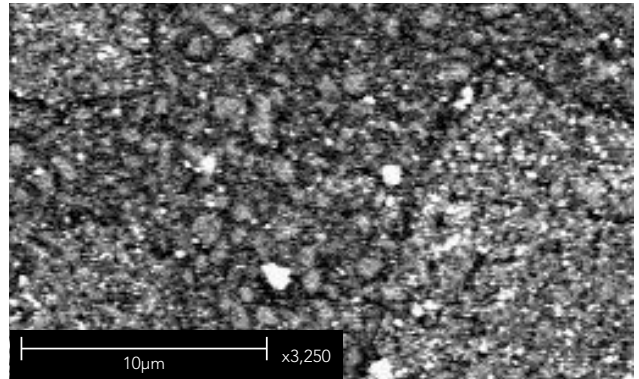
Product A – Clustered Nano-filled Composite

Typically contains spherical nano clusters made up of agglomerated nano fillers of varying size



Product B – Micro Hybrid Composite

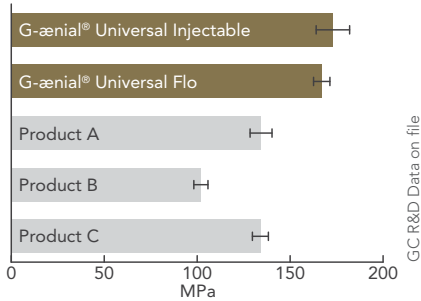
Typically contains a range of glass and nano fillers of varying sizes



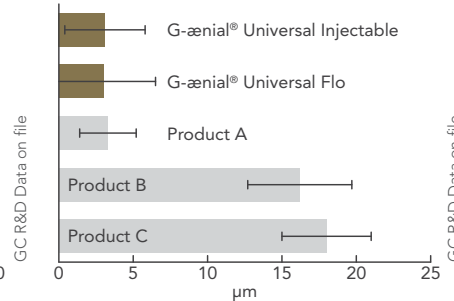
G-ænial® Universal Injectable

Universally superior properties are all achieved through new manufacturing techniques which accentuate GC's full-coverage silane coating (FSC) technology.

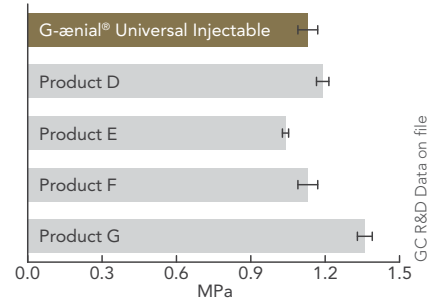
Superior Flexural Strength



Wear resistance



Shrinkage stress (comparison to bulk fill resins)



Superior Wear resistance and polish retention

Individually dispersed 150nm sized fillers used in G-ænial® Universal Injectable provide greater wear resistance and improved polish and polish retention.



Before

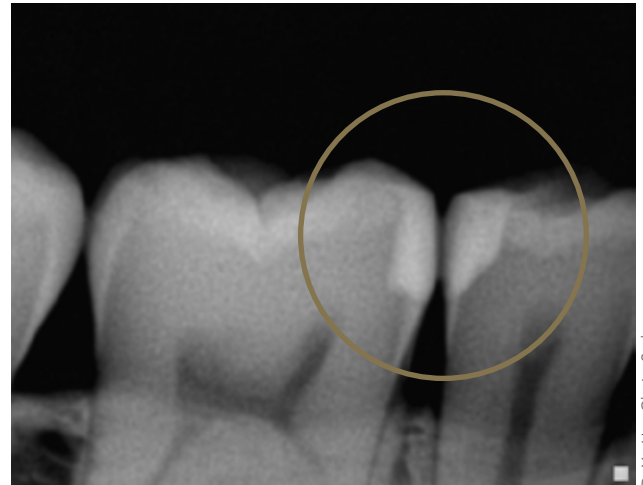


After

Dr Clarence Tam – New Zealand

High Radiopacity

Radiopacity 252%Al



Dr Yo-Han Choi – Sydney

Clinical Observations

Case 1: Class IV Restoration – Dr Anthony Mak

Complex class IV build up using 2 shades and Essentia white modifier.



1. Before – large class IV fracture on an adolescent patient.



2. Opaque layer shade A02 placed, followed by enamel shade JE.



3. Polished final result – Harmonious restoration of a complex class IV restoration using an injectable composite in 2 shades.

Dr Anthony Mak – Sydney

Case 2: Posterior Occlusal Wear – Dr Anthony Mak

Management of the “early worn dentition”.



1. Early wear evident on 40-year old patient needing conservative management.



2. Old composite restorations removed and teeth micro-etched. Build up and restorations on the occlusal surface using alternate teeth technique.



3. Final restorations using a single shade injection technique, shade A1.

Dr Anthony Mak – Sydney

Case 3: Class II Restoration – Dr Javier Tapia Guadix



1. Removal of the old restoration and caries removal.



2. Building the proximal wall using the enamel shade JE. A Class I procedure can now be followed; the dentine layer was created with shade A4.



3. 3-month review.

Dr Javier Tapia Guadix – Spain

Case 4: Lower Anterior Wear and Class V Restorations – Dr Anthony Mak

Full-incisal build up and cervical lesions with single shade.



1. Pre-operative showing lower incisal wear and cervical lesions requiring conservative restorations.



2. Full build up and VDO increase of lower incisors using a single shade and cervical lesions requiring restorations.



3. Final conservative management of different types of restorations using a single shade.

Dr Anthony Mak – Sydney

G-ænia[®] Universal Injectable



Packages:

1 Syringe Pack

1x Syringe 1.7g (1.0mL), 5x Dispensing Tip Needle, 5x Dispensing Tip Long Needle, 1x Light-protective Cap

2 Syringe Pack

(available in shades A1, A2, A3)

2x Syringe 1.7g (1.0mL), 10x Dispensing Tip Needle, 10x Dispensing Tip Long Needle

Dispensing Tip Refill

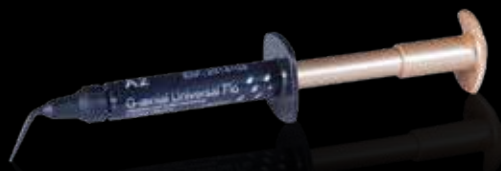
20x Dispensing Tip Long Needle

Shades:

XBW, BW, A1, A2, A3, A3.5, A4, B1, B2, CV, CVD, AO1, AO2, AO3, JE, AE



G-ænia[®] Universal Flo



Shades:

A1, A2, A3, A3.5, A4, BW, B1, B2, B3, C3, CV, AO2, AO3, AE, JE

G-ænia[®] Flo X



Shades:

A1, A2, A3, AO2



Since 1921
Towards Century of Health

GC Australasia Dental Pty Ltd
1753 Botany Road Banksmeadow
NSW 2019 Australia

T: +61 2 9301 8200
E: info.australasia@gc.dental
www.gcaustralasia.com